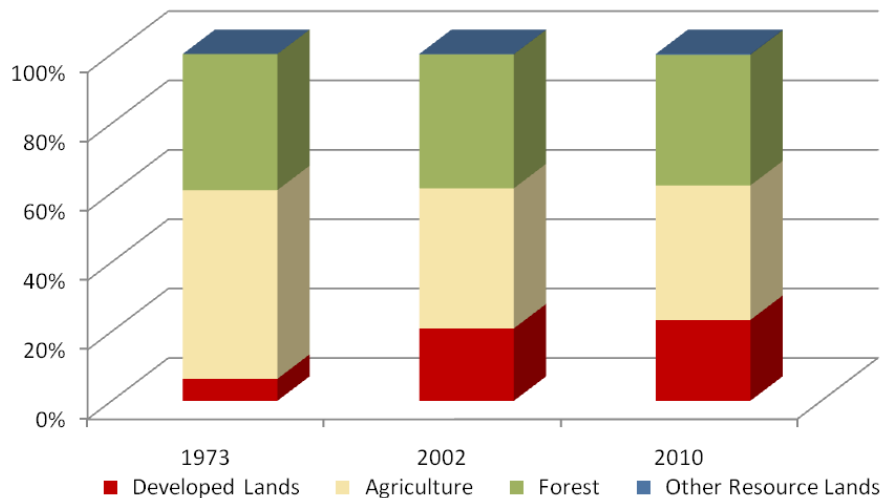


Washington County

	Land Use in Acres		Land Use Change	
	2002 ³ Acres	2010 ² Acres	2002-2010 Acres	Percent
Very Low Density Residential ¹	12,310	13,599	1,289	10.5%
Low Density Residential	24,025	26,183	2,159	9.0%
Medium Density Residential	7,946	8,578	632	8.0%
High Density Residential	1,520	1,791	271	17.8%
Commercial	4,346	5,272	926	21.3%
Industrial	3,134	3,697	563	18.0%
Other Developed Lands/ Institutional/Transportation ¹	7,826	9,111	1,285	16.4%
Total Developed Lands⁵	61,106	68,231	7,124	11.7%
Agriculture	118,308	113,522	-4,786	-4.0%
Forest	113,069	110,322	-2,746	-2.4%
Extractive/Barren/Bare	200	608	408	203.7%
Wetland	55	55	0	0.0%
Total Resource Lands⁵	231,632	224,508	-7,124	-3.1%
Total Land	292,739	292,739		
Water	6,126	6,125		

	Land Use in Acres			Land Use Change
	1973 ⁴	2002 ³	2010 ^{1,2}	1973-2010 Acres
All Residential	12,438	45,801	50,151	37,713
All Non-Residential	6,110	15,306	18,079	11,969
Total Developed Lands⁵	18,548	61,106	68,231	49,682
Total Resource Lands⁵	274,377	231,632	224,508	-49,868
Total Land	292,925	292,739	292,739	
Water	5,940	6,126	6,125	

Land Use Change 1973 - 2010



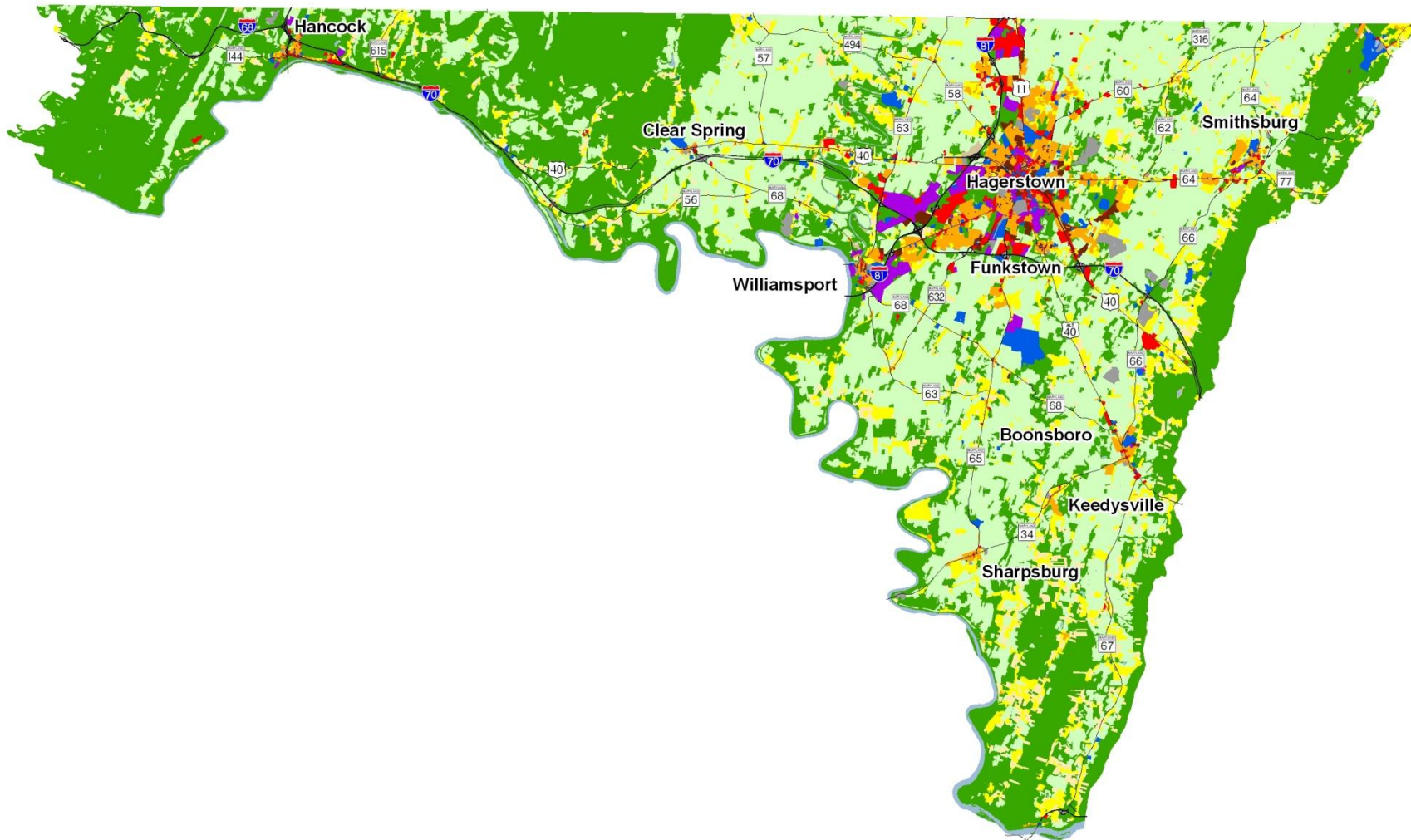
1. Two new categories have been added to the 2010 Land Use/Land Cover layer update; very low density residential development (191,192) and transportation (80).

2. Updates/modifications to the 2010 land use/land cover layers used the 2007 NAIP aerial imagery and parcel information from Maryland Property View 2008.

3. The original 2002 data were mapped using geo-rectified LANDSAT satellite imagery and 2000 MD Property View. In 2010 two new land use categories were added, transportation and very low density residential making it necessary to modify the 2002 land use/land cover layer to incorporate these categories for comparative purposes. Additionally, better imagery and property data information were used to make further modifications. The enhanced 2002 dataset is available upon request.

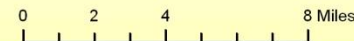
4. Very low density residential was not mapped in 1973, so there is no data associated with changes. Transportation was not mapped in 1973.

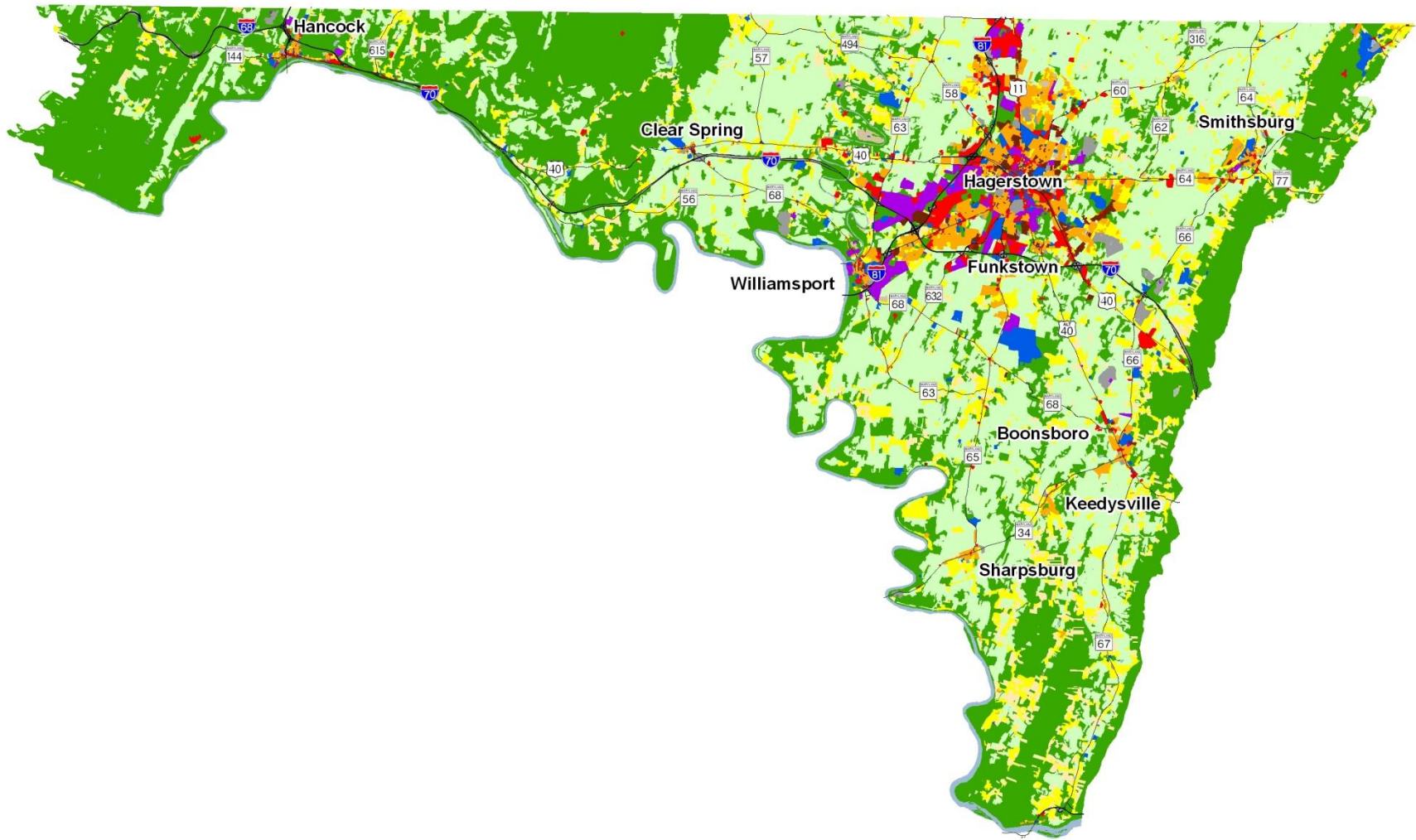
5. As noted above, new land use categories were added in 2010 and associated adjustments were made to 2002 data. Similar adjustments were not made to 1973 data, making it impossible to know how much change from 1973 is due to new development since then, versus misclassified land uses at that time. For these reasons, we suggest reliance only on change statistics for the aggregate land use categories, Total Developed and Total Resource Lands



Washington County 2002 Land Use/Land Cover

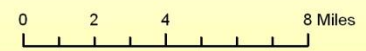
1) The original 2002 data were mapped using geo-rectified LANDSAT satellite imagery and 2000 MD Property View. In 2010 two new land use categories were added, transportation and very low density residential making it necessary to modify the 2002 land use/land cover layer to incorporate these categories for comparative purposes. Additionally, better imagery and property data information were used to make further modifications. The enhanced 2002 dataset is available upon request.

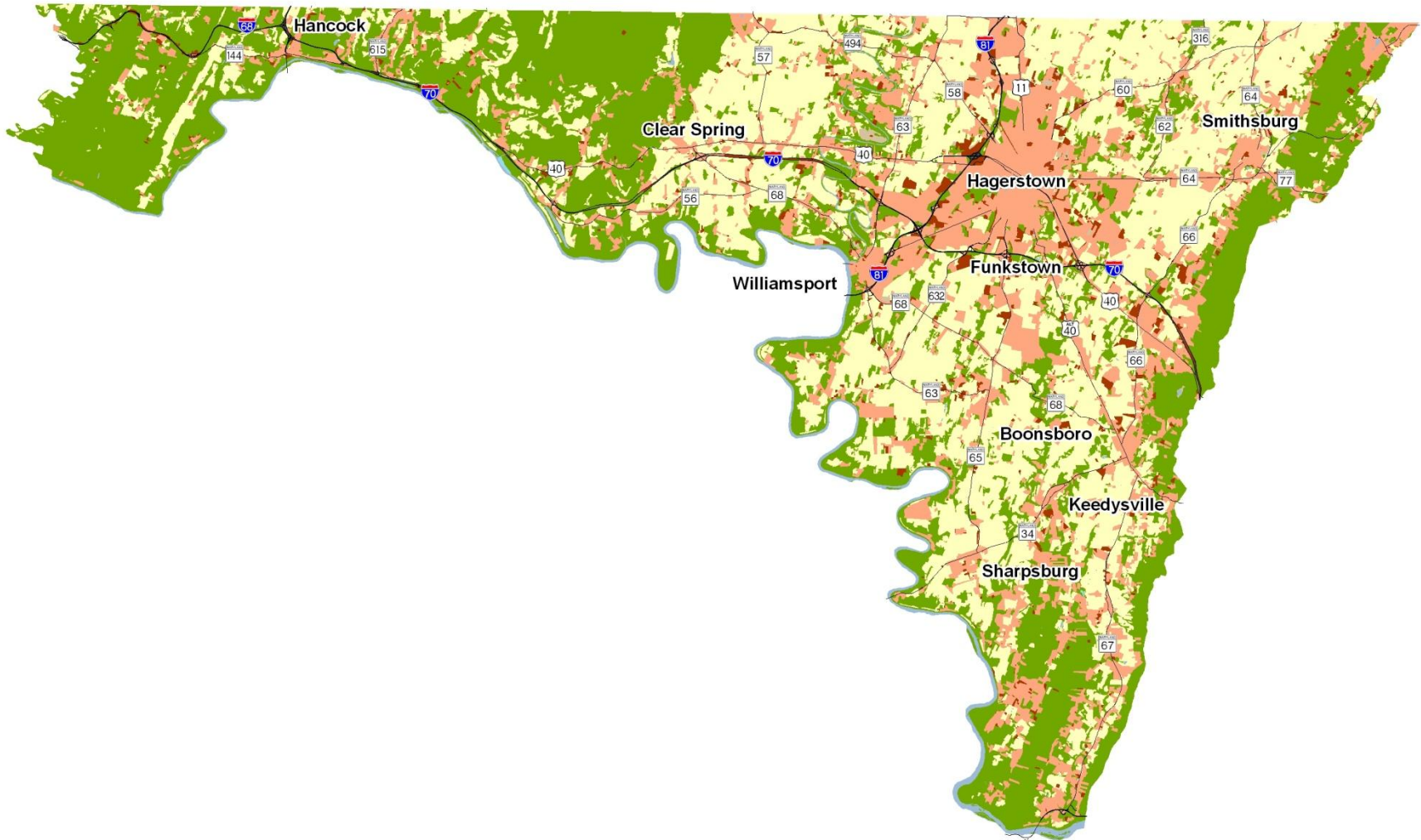




Washington County 2010 Land Use/Land Cover

1) Two new categories have been added to the 2010 Land Use/Land Cover layer update; very low density residential development (191,192) and transportation (80).
 2) Updates/modifications to the 2010 land use/land cover layers used the 2007 NAIP aerial imagery and parcel information from Maryland Property View 2008.





Washington County New Development, 2002-2010

1) Updates/modifications to the 2010 land use/land cover layers used the 2007 NAIP aerial imagery and parcel information from Maryland Property View 2008.

2) The original 2002 data were mapped using geo-rectified LANDSAT satellite imagery and 2000 MD Property View. In 2010 two new land use categories were added, transportation and very low density residential, making it necessary to modify the 2002 land use/land cover layer to incorporate these categories for comparative purposes.

0 2 4 8 Miles