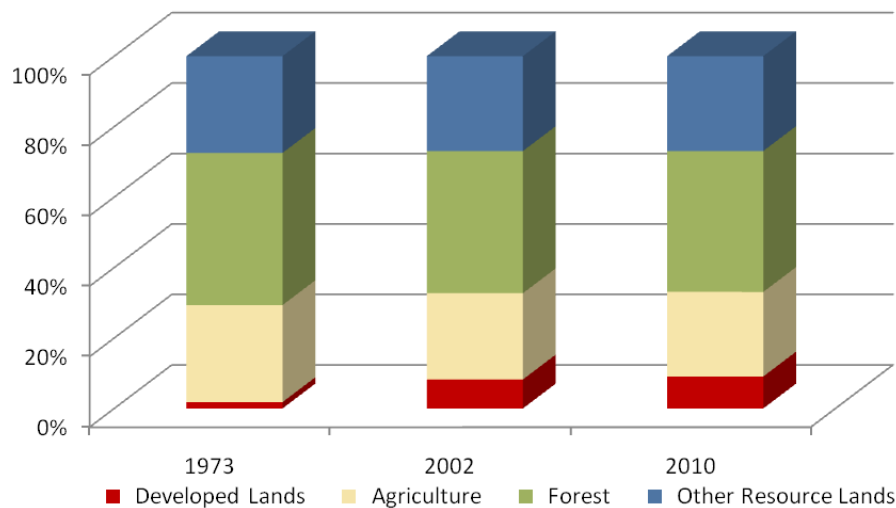


# Somerset County

	Land Use in Acres		Land Use Change	
	2002 <sup>3</sup> Acres	2010 <sup>2</sup> Acres	2002-2010 Acres	Percent
Very Low Density Residential <sup>1</sup>	5,966	6,413	447	7.5%
Low Density Residential	6,674	7,650	976	14.6%
Medium Density Residential	1,390	1,465	75	5.4%
High Density Residential	325	337	12	3.8%
Commercial	629	654	24	3.9%
Industrial	443	484	41	9.2%
Other Developed Lands/ Institutional/Transportation <sup>1</sup>	1,596	1,771	175	11.0%
<b>Total Developed Lands<sup>5</sup></b>	<b>17,023</b>	<b>18,773</b>	<b>1,750</b>	<b>10.3%</b>
Agriculture	50,690	49,693	-997	-2.0%
Forest	83,532	82,822	-710	-0.9%
Extractive/Barren/Bare	138	128	-10	-7.2%
Wetland	55,605	55,572	-33	-0.1%
<b>Total Resource Lands<sup>5</sup></b>	<b>189,965</b>	<b>188,215</b>	<b>-1,751</b>	<b>-0.9%</b>
Total Land	206,988	206,988		
Water	145,592	145,592		

	Land Use in Acres			Land Use Change
	1973 <sup>4</sup>	2002 <sup>3</sup>	2010 <sup>1,2</sup>	1973-2010 Acres
All Residential	2,635	14,354	15,864	13,229
All Non-Residential	1,088	2,668	2,909	1,821
<b>Total Developed Lands<sup>5</sup></b>	<b>3,723</b>	<b>17,023</b>	<b>18,773</b>	<b>15,050</b>
<b>Total Resource Lands<sup>5</sup></b>	<b>203,434</b>	<b>189,965</b>	<b>188,215</b>	<b>-15,219</b>
Total Land	207,156	206,988	206,988	
Water	145,424	145,592	145,592	

**Land Use Change 1973 - 2010**



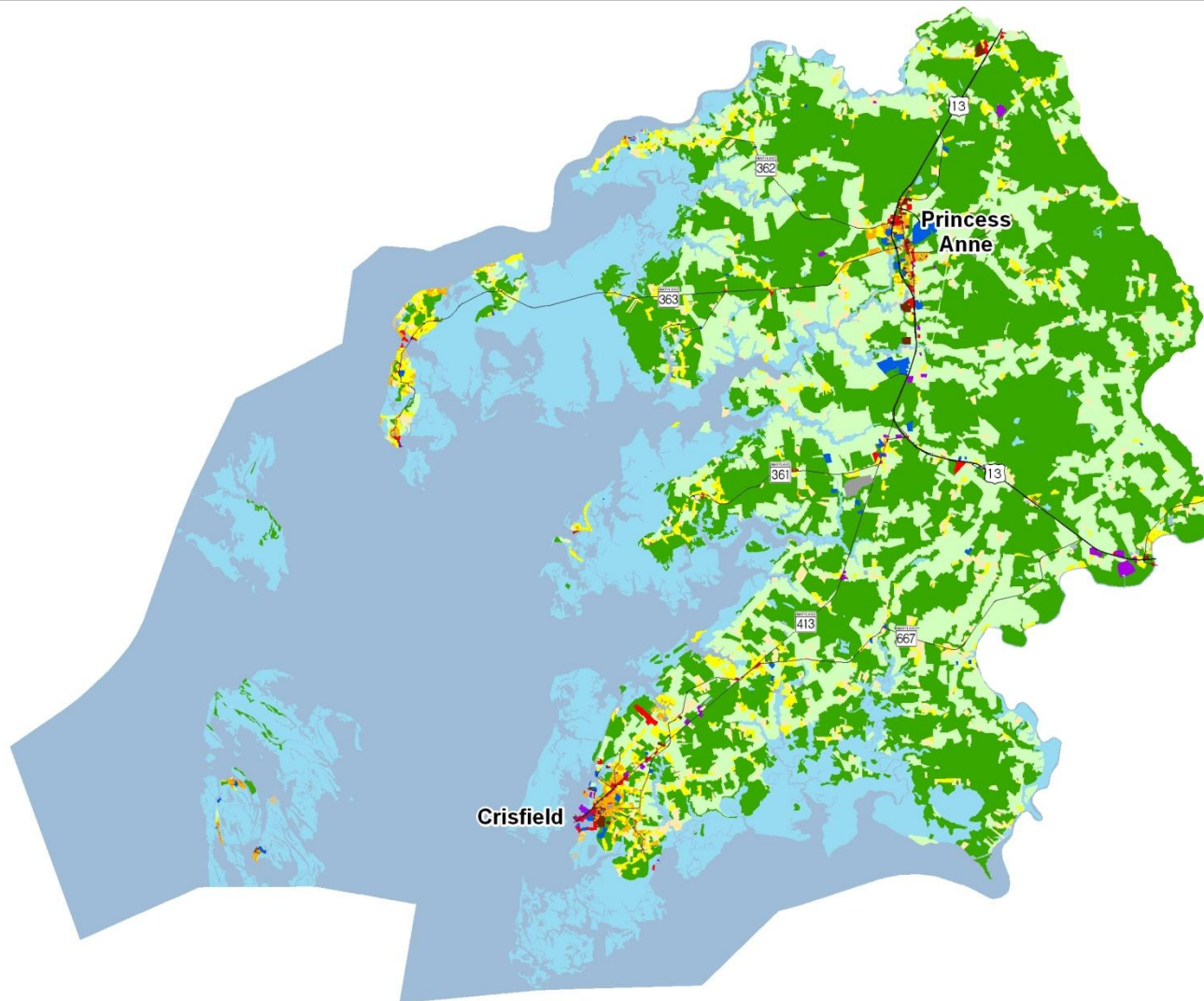
1. Two new categories have been added to the 2010 Land Use/Land Cover layer update; very low density residential development (191,192) and transportation (80).

2. Updates/modifications to the 2010 land use/land cover layers used the 2007 NAIP aerial imagery and parcel information from Maryland Property View 2008.

3. The original 2002 data were mapped using geo-rectified LANDSAT satellite imagery and 2000 MD Property View. In 2010 two new land use categories were added, transportation and very low density residential making it necessary to modify the 2002 land use/land cover layer to incorporate these categories for comparative purposes. Additionally, better imagery and property data information were used to make further modifications. The enhanced 2002 dataset is available upon request.

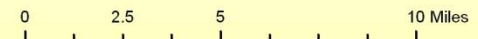
4. Very low density residential was not mapped in 1973, so there is no data associated with changes. Transportation was not mapped in 1973.

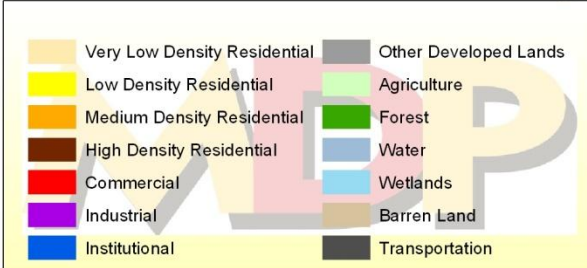
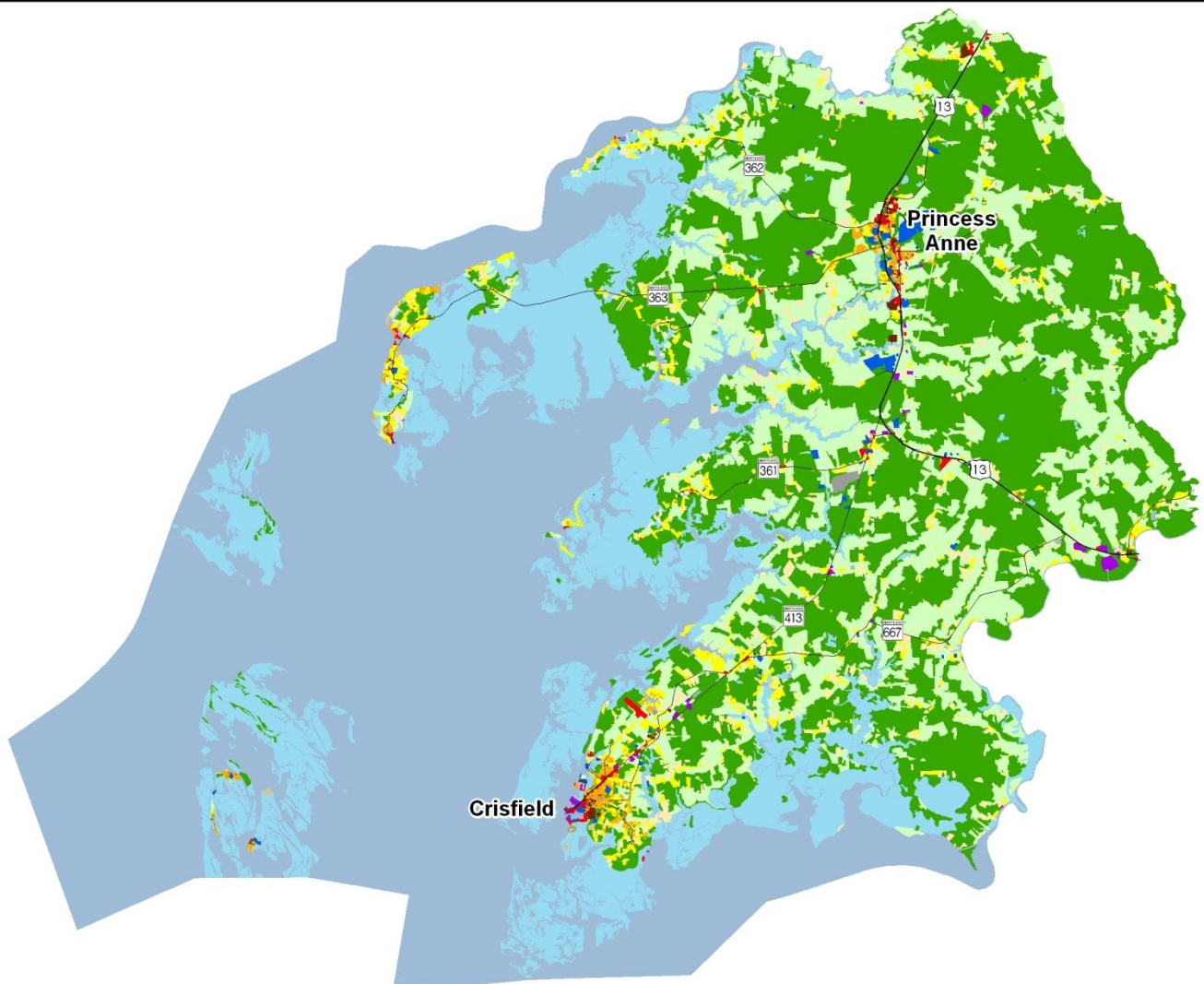
5. As noted above, new land use categories were added in 2010 and associated adjustments were not made to 1973 data, making it impossible to know how much change from 1973 is due to new development since then, versus misclassified land uses at that time. For these reasons, we suggest reliance only on change statistics for the aggregate land use categories, Total Developed and Total Resource Lands



## Somerset County 2002 Land Use/Land Cover

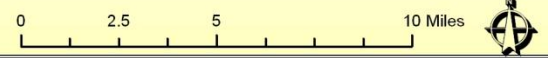
1) The original 2002 data were mapped using geo-rectified LANDSAT satellite imagery and 2000 MD Property View. In 2010 two new land use categories were added, transportation and very low density residential making it necessary to modify the 2002 land use/land cover layer to incorporate these categories for comparative purposes. Additionally, better imagery and property data information were used to make further modifications. The enhanced 2002 dataset is available upon request.



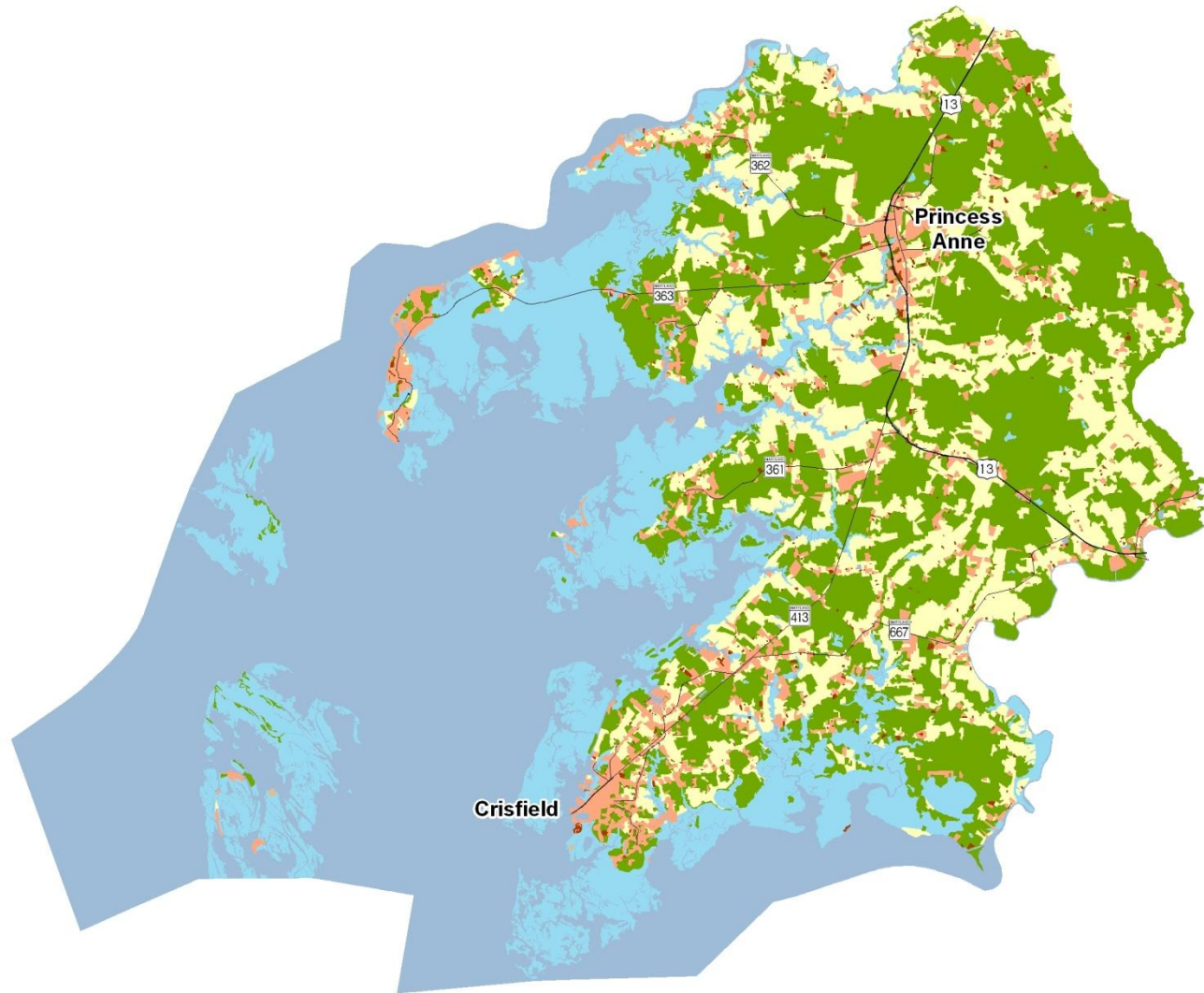


## Somerset County 2010 Land Use/Land Cover

1) Two new categories have been added to the 2010 Land Use/Land Cover layer update; very low density residential development (191,192) and transportation (80).  
 2) Updates/modifications to the 2010 land use/land cover layers used the 2007 NAIP aerial imagery and parcel information from Maryland Property View 2008.







## Somerset County New Development, 2002-2010

1) Updates/modifications to the 2010 land use/land cover layers used the 2007 NAIP aerial imagery and parcel information from Maryland Property View 2008.

2) The original 2002 data were mapped using geo-rectified LANDSAT satellite imagery and 2000 MD Property View. In 2010 two new land use categories were added, transportation and very low density residential, making it necessary to modify the 2002 land use/land cover layer to incorporate these categories for comparative purposes.

0      2      4      8 Miles