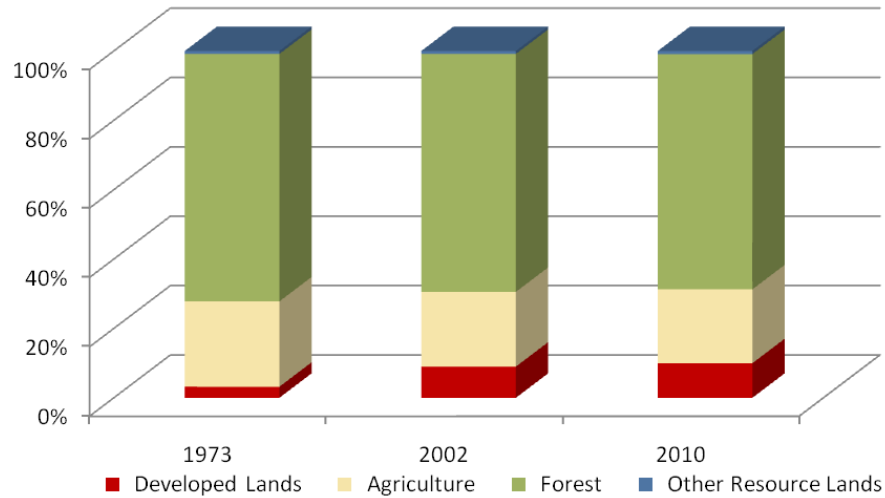


Garrett County

	Land Use in Acres		Land Use Change	
	2002 ³ Acres	2010 ² Acres	2002-2010 Acres	Percent
Very Low Density Residential ¹	11,357	12,823	1,465	12.9%
Low Density Residential	15,008	16,732	1,724	11.5%
Medium Density Residential	2,443	2,537	93	3.8%
High Density Residential	259	298	38	14.7%
Commercial	1,793	2,237	444	24.8%
Industrial	176	204	29	16.2%
Other Developed Lands/ Institutional/Transportation ¹	6,654	6,967	314	4.7%
Total Developed Lands⁵	37,690	41,797	4,107	10.9%
Agriculture	90,392	89,323	-1,069	-1.2%
Forest	287,654	284,457	-3,197	-1.1%
Extractive/Barren/Bare	844	1,007	163	19.3%
Wetland	2,714	2,710	-4	-0.2%
Total Resource Lands⁵	381,603	377,496	-4,107	-1.1%
Total Land	419,293	419,293		
Water	5,767	5,767		

	Land Use in Acres			Land Use Change
	1973 ⁴	2002 ³	2010 ^{1,2}	1973-2010 Acres
All Residential	5,205	29,067	32,388	27,183
All Non-Residential	8,163	8,622	9,409	1,245
Total Developed Lands⁵	13,368	37,690	41,797	28,429
Total Resource Lands⁵	406,057	381,603	377,496	-28,561
Total Land	419,425	419,293	419,293	
Water	5,635	5,767	5,767	

Land Use Change 1973 - 2010



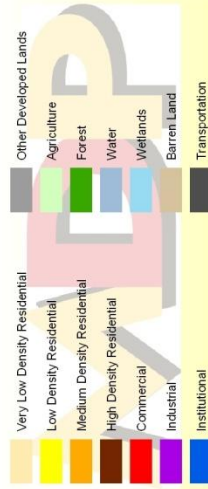
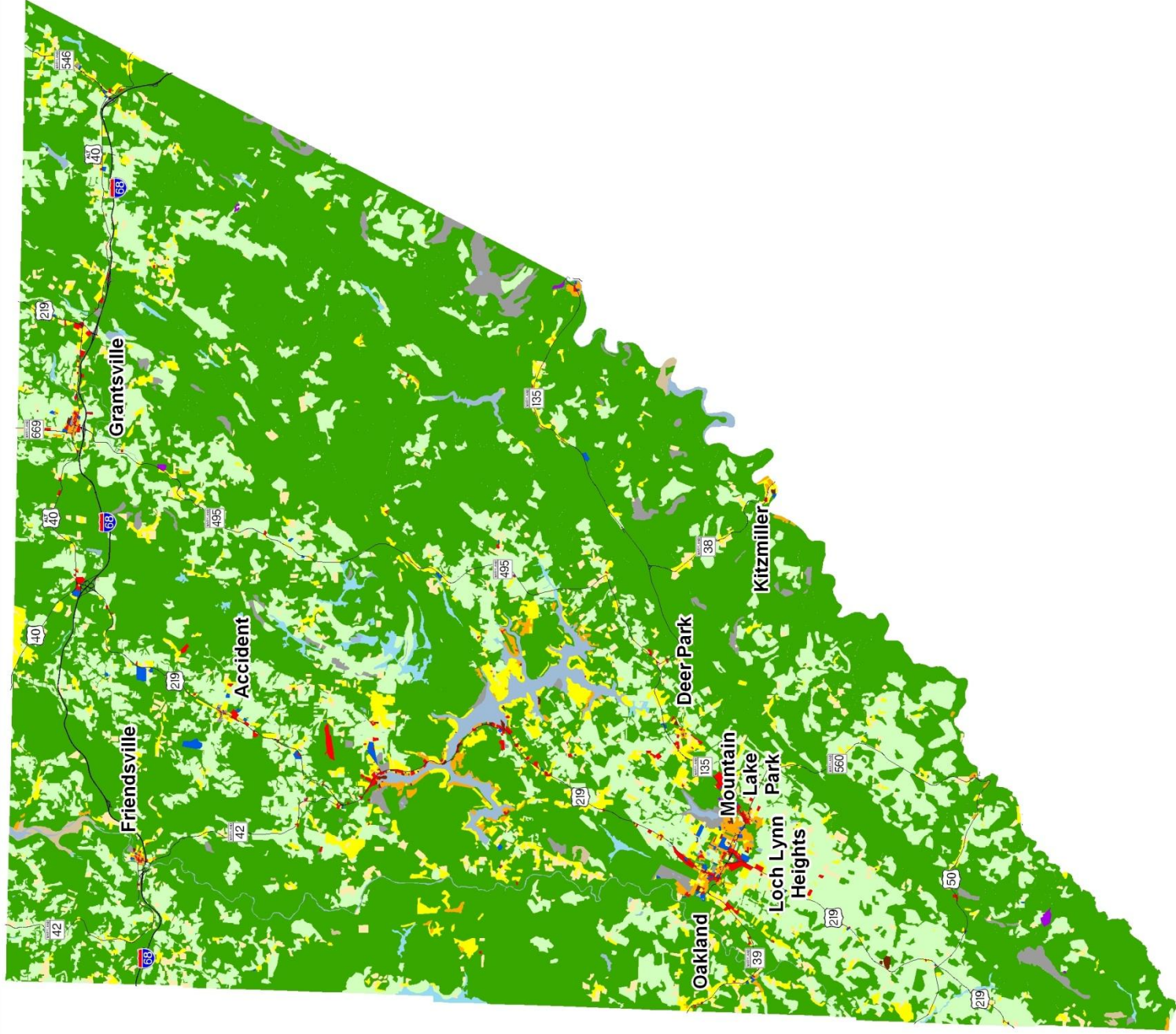
1. Two new categories have been added to the 2010 Land Use/Land Cover layer update; very low density residential development (191,192) and transportation (80).

2. Updates/modifications to the 2010 land use/land cover layers used the 2007 NAIP aerial imagery and parcel information from Maryland Property View 2008.

3. The original 2002 data were mapped using geo-rectified LANDSAT satellite imagery and 2000 MD Property View. In 2010 two new land use categories were added, transportation and very low density residential making it necessary to modify the 2002 land use/land cover layer to incorporate these categories for comparative purposes. Additionally, better imagery and property data information were used to make further modifications. The enhanced 2002 dataset is available upon request.

4. Very low density residential was not mapped in 1973, so there is no data associated with changes. Transportation was not mapped in 1973.

5. As noted above, new land use categories were added in 2010 and associated adjustments were made to 2002 data. Similar adjustments were not made to 1973 data, making it impossible to know how much change from 1973 is due to new development since then, versus misclassified land uses at that time. For these reasons, we suggest reliance only on change statistics for the aggregate land use categories, Total Developed and Total Resource Lands

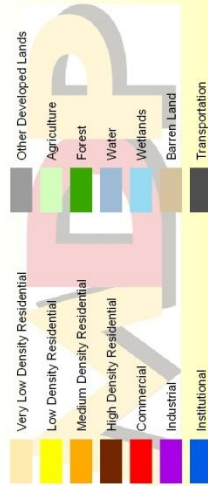
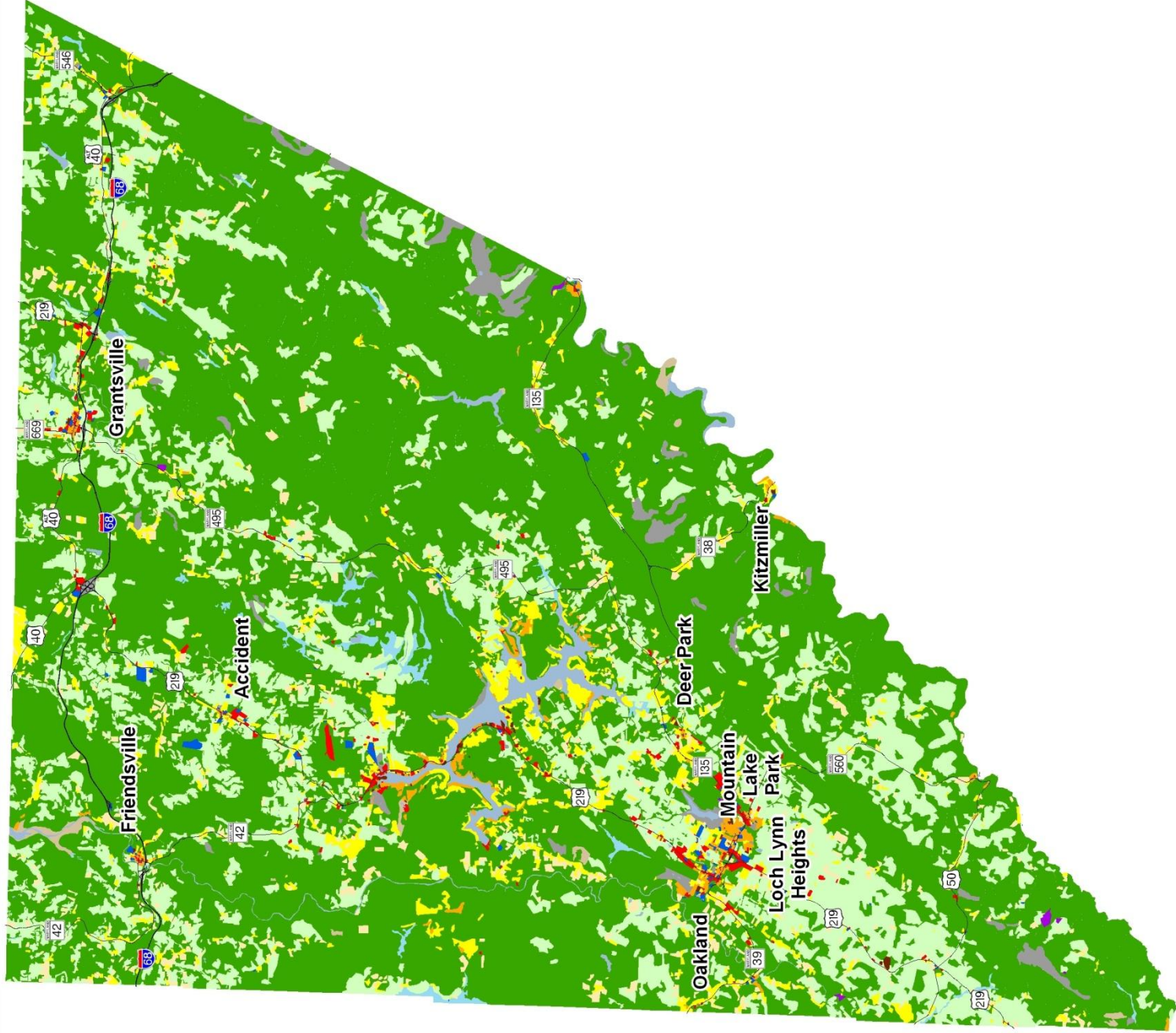


Garrett County 2002 Land Use/Land Cover

1) The original 2002 data were mapped using geo-rectified LANDSAT satellite imagery and 2000 MD PropertyView. In 2010 two new land use categories were added, transportation and very low density residential making it necessary to modify the 2002 land use/land cover layer to incorporate these categories for comparative purposes. Additionally, better imagery and property data information were used to make further modifications. The enhanced 2002 dataset is available upon request.

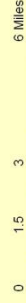
0 1.5 3 6 Miles

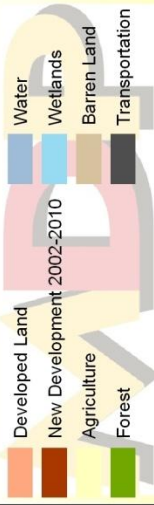
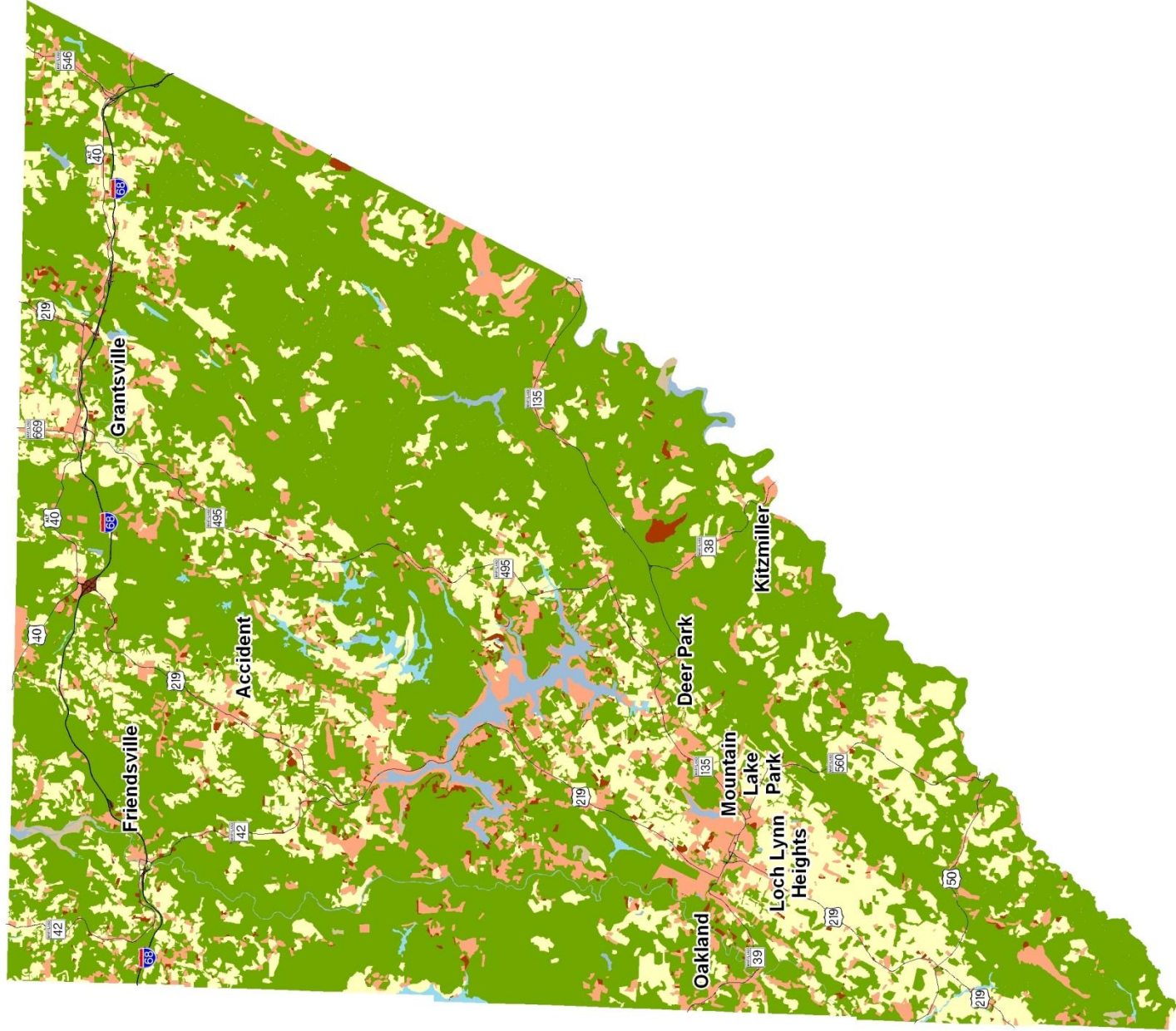




Garrett County 2010 Land Use/Land Cover

- 1) Two new categories have been added to the 2010 Land Use/Land Cover layer update; very low density residential development (191, 192) and transportation (80).
- 2) Updates/modifications to the 2010 land use/land cover layers used the 2007 NAIP aerial imagery and parcel information from Maryland Property View 2008.





Garrett County New Development, 2002-2010

1) Updates/modifications to the 2010 land use/land cover layers used the 2007 NAI, aerial imagery and parcel information from Maryland Property View 2008.
 2) The original 2002 data were mapped using geo-rectified LANDSAT satellite imagery and 2000 MD Property View. In 2010 two new land use categories were added, transportation and very low density residential, making it necessary to modify the 2002 land use/land cover layer to incorporate these categories for comparative purposes.

