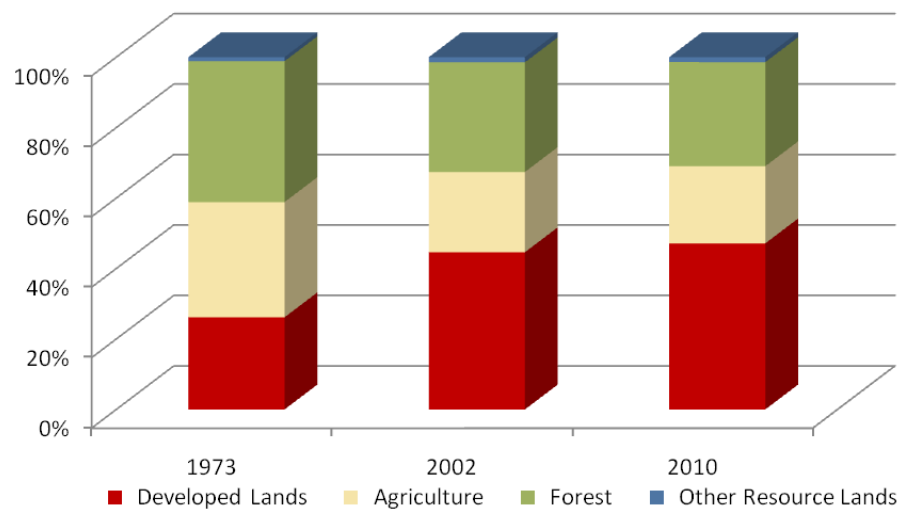


# Baltimore County

	Land Use in Acres		Land Use Change	
	2002 <sup>3</sup> Acres	2010 <sup>2</sup> Acres	2002-2010 Acres	Percent
Very Low Density Residential <sup>1</sup>	26,613	27,960	1,348	5.1%
Low Density Residential	47,457	50,430	2,974	6.3%
Medium Density Residential	38,475	40,259	1,784	4.6%
High Density Residential	16,476	17,496	1,020	6.2%
Commercial	10,695	11,424	729	6.8%
Industrial	9,926	10,590	664	6.7%
Other Developed Lands/ Institutional/Transportation <sup>1</sup>	22,086	23,226	1,140	5.2%
<b>Total Developed Lands<sup>5</sup></b>	<b>171,728</b>	<b>181,387</b>	<b>9,658</b>	<b>5.6%</b>
Agriculture	87,682	84,290	-3,392	-3.9%
Forest	119,760	113,701	-6,059	-5.1%
Extractive/Barren/Bare	1,639	1,471	-168	-10.2%
Wetland	3,975	3,936	-39	-1.0%
<b>Total Resource Lands<sup>5</sup></b>	<b>213,057</b>	<b>203,398</b>	<b>-9,658</b>	<b>-4.5%</b>
<b>Total Land</b>	<b>384,785</b>	<b>384,785</b>		
<b>Water</b>	<b>57,092</b>	<b>57,092</b>		

	Land Use in Acres			Land Use Change
	1973 <sup>4</sup>	2002 <sup>3</sup>	2010 <sup>1,2</sup>	1973-2010 Acres
All Residential	67,296	129,021	136,146	68,850
All Non-Residential	33,092	42,707	45,240	12,148
<b>Total Developed Lands<sup>5</sup></b>	<b>100,388</b>	<b>171,728</b>	<b>181,387</b>	<b>80,999</b>
<b>Total Resource Lands<sup>5</sup></b>	<b>283,346</b>	<b>213,057</b>	<b>203,398</b>	<b>-79,947</b>
<b>Total Land</b>	<b>383,733</b>	<b>384,785</b>	<b>384,785</b>	
<b>Water</b>	<b>58,144</b>	<b>57,092</b>	<b>57,092</b>	

Land Use Change 1973 - 2010



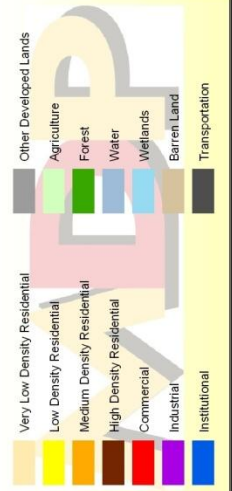
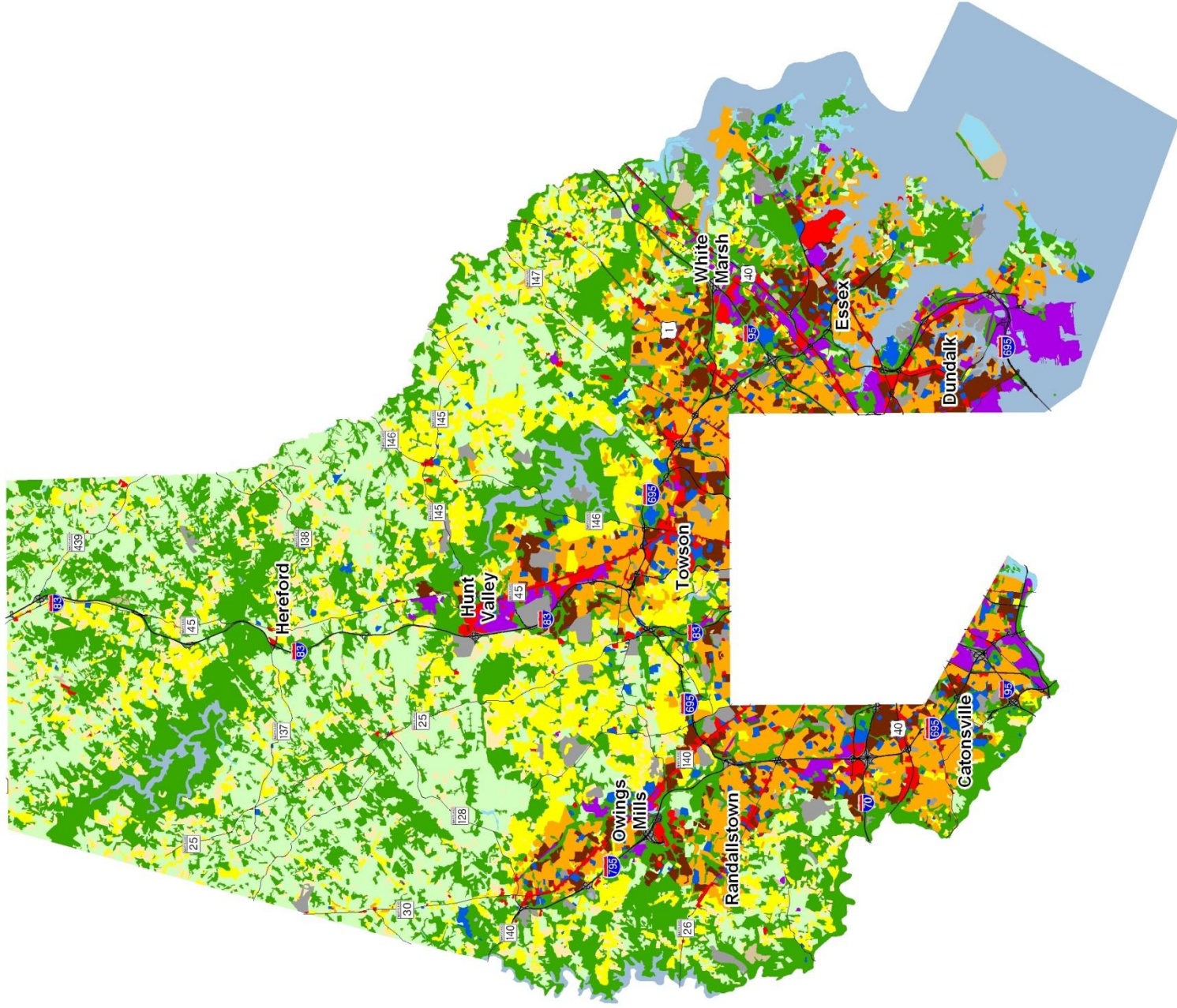
1. Two new categories have been added to the 2010 Land Use/Land Cover layer update; very low density residential development (191,192) and transportation (80).

2. Updates/modifications to the 2010 land use/land cover layers used the 2007 NAIP aerial imagery and parcel information from Maryland Property View 2008.

3. The original 2002 data were mapped using geo-rectified LANDSAT satellite imagery and 2000 MD Property View. In 2010 two new land use categories were added, transportation and very low density residential making it necessary to modify the 2002 land use/land cover layer to incorporate these categories for comparative purposes. Additionally, better imagery and property data information were used to make further modifications. The enhanced 2002 dataset is available upon request.

4. Very low density residential was not mapped in 1973, so there is no data associated with changes. Transportation was not mapped in 1973.

5. As noted above, new land use categories were added in 2010 and associated adjustments were made to 2002 data. Similar adjustments were not made to 1973 data, making it impossible to know how much change from 1973 is due to new development since then, versus misclassified land uses at that time. For these reasons, we suggest reliance only on change statistics for the aggregate land use categories, Total Developed and Total Resource Lands

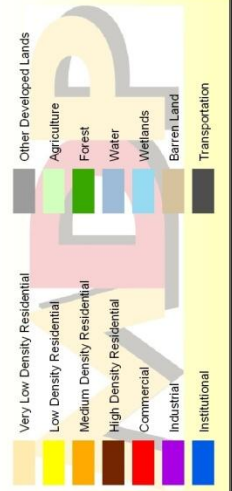
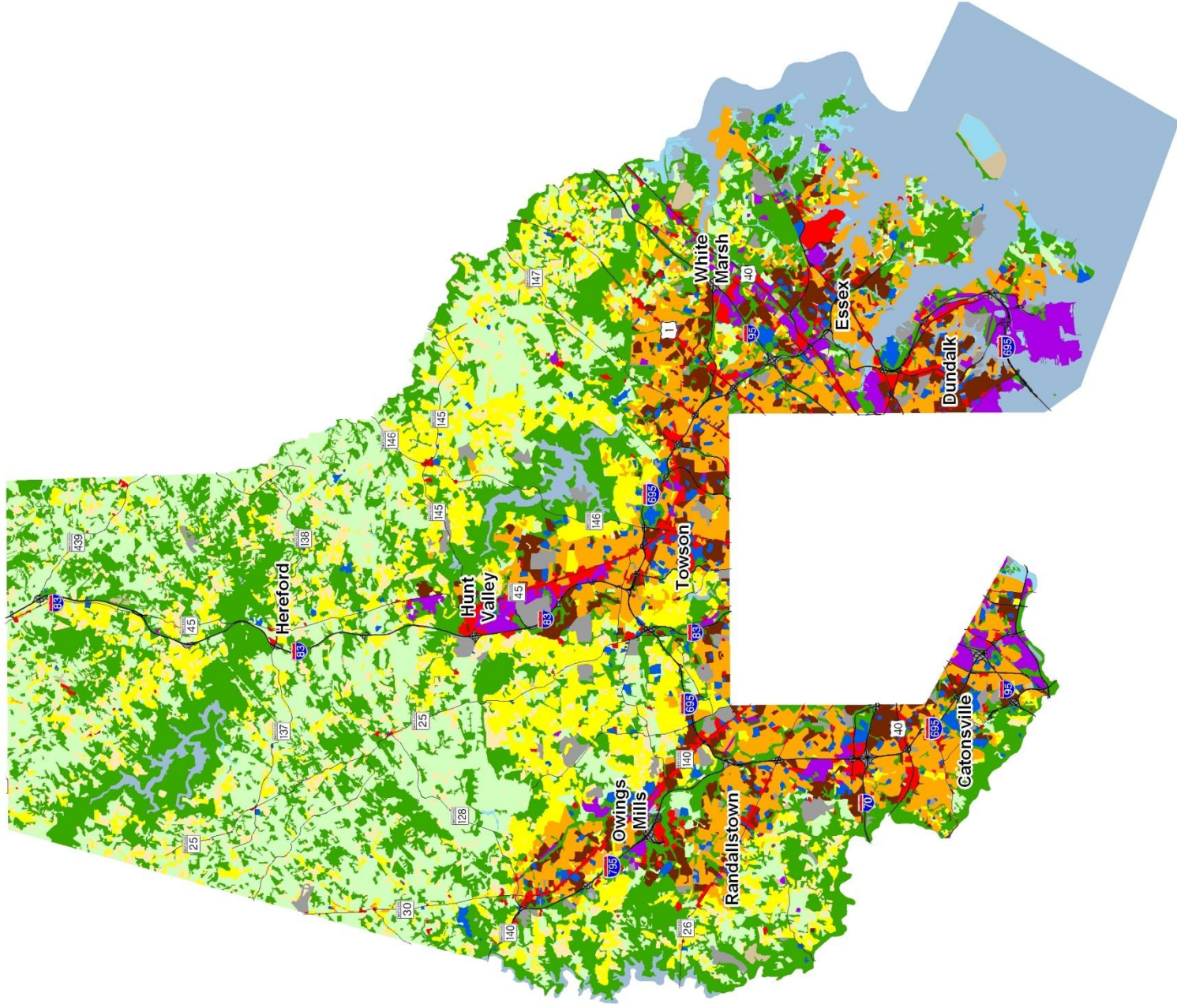


## Baltimore County 2002 Land Use/Land Cover

1) The original 2002 data were mapped using geo-rectified LANDSAT satellite imagery and 2000 MD PropertyView. In 2010 two new land use categories were added, transportation and very low density residential making it necessary to modify the 2002 land use/land cover layer to incorporate these categories for comparative purposes. Additionally, better imagery and property data information were used to make further modifications. The enhanced 2002 dataset is available upon request.

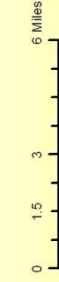




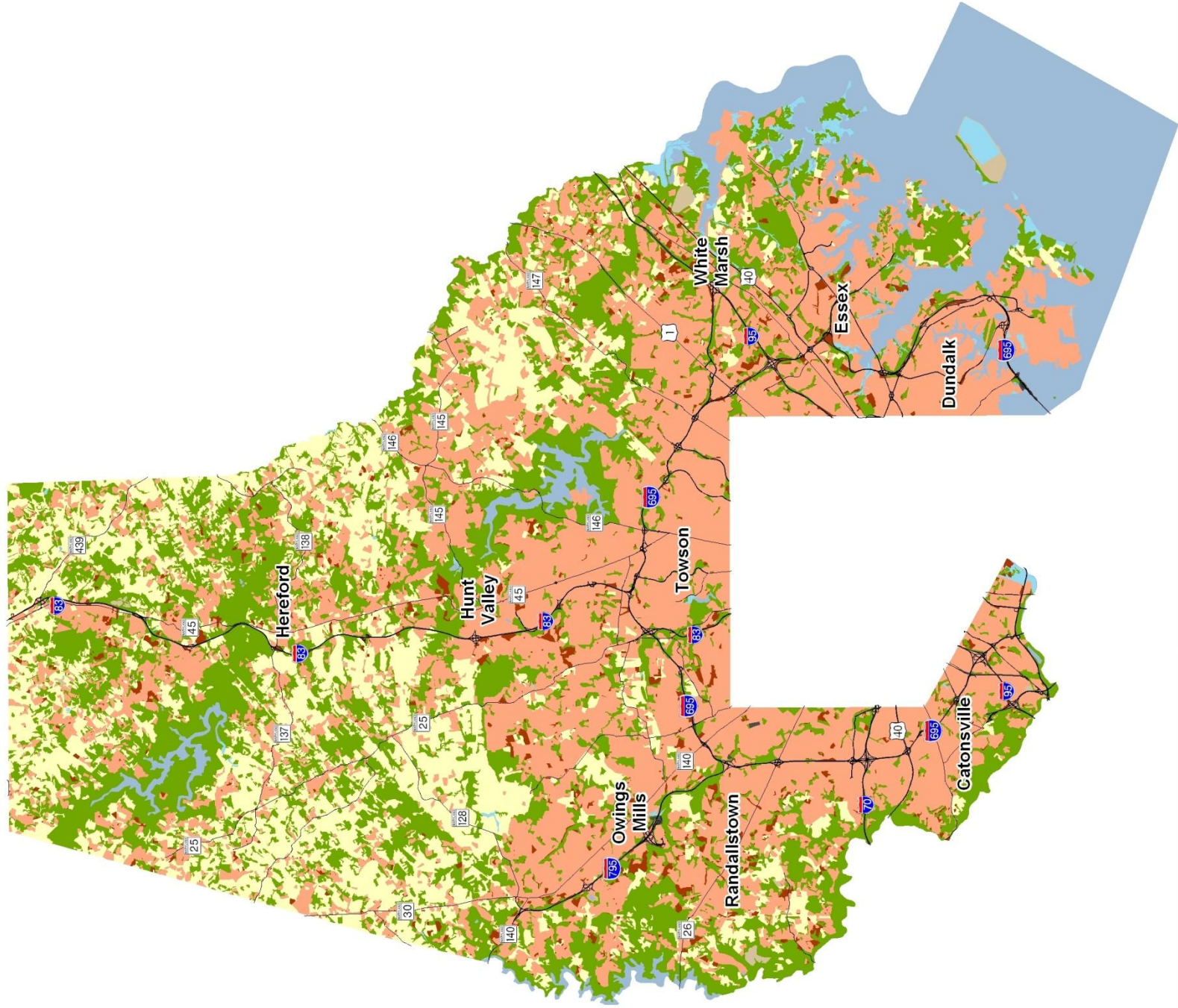


## Baltimore County 2010 Land Use/Land Cover

- 1) Two new categories have been added to the 2010 Land Use/Land Cover layer update: very low density residential development (191, 192) and transportation (80).
- 2) Updates/modifications to the 2010 land use/land cover layers used the 2007 NAIP aerial imagery and parcel information from Maryland Property View 2008.







1) Updates/modifications to the 2010 land use/land cover layers used the 2007 NAIP aerial imagery and parcel information from Maryland Property View 2008.

2) The original 2002 data were mapped using geo-rectified LANDSAT satellite imagery and 2000 IMD Property View. In 2010 two new land use categories were added, transportation and very low density residential, making it necessary to modify the 2002 land use/land cover layer to incorporate these categories for comparative purposes.

0 0.5 1 2 Miles



## Baltimore County New Development, 2002-2010

