

A man in a dark suit and glasses is lying face down on a paved road, positioned over a yellow double line. The background shows a clear blue sky, streetlights, and some commercial buildings in the distance.

# Confessions of a Recovering Engineer

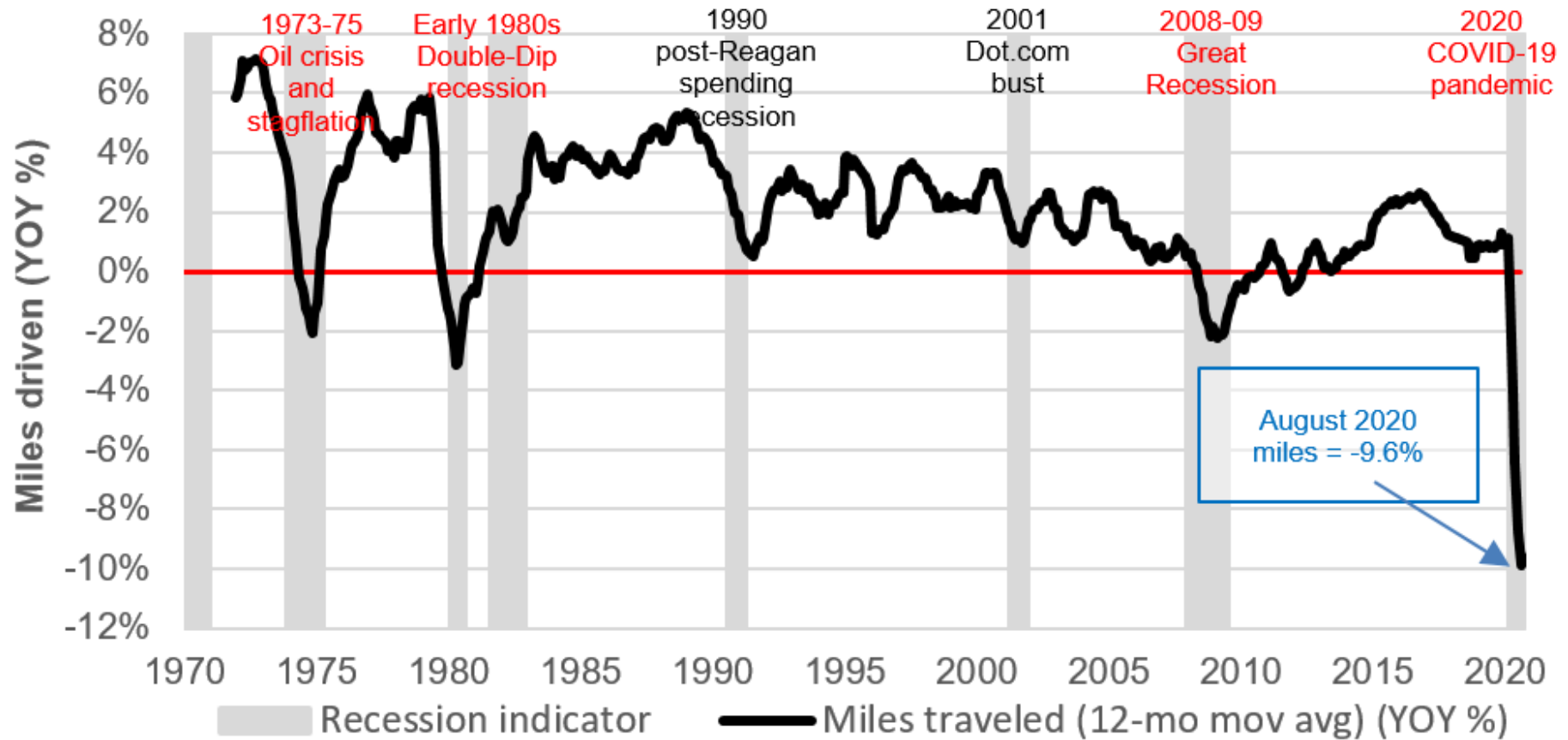
TRANSPORTATION FOR A STRONG TOWN

Charles L. Marohn, Jr. | Civil Engineer, Urban Planner, Author  
@clmarohn | @strongtowns | [www.strongtowns.org](http://www.strongtowns.org)



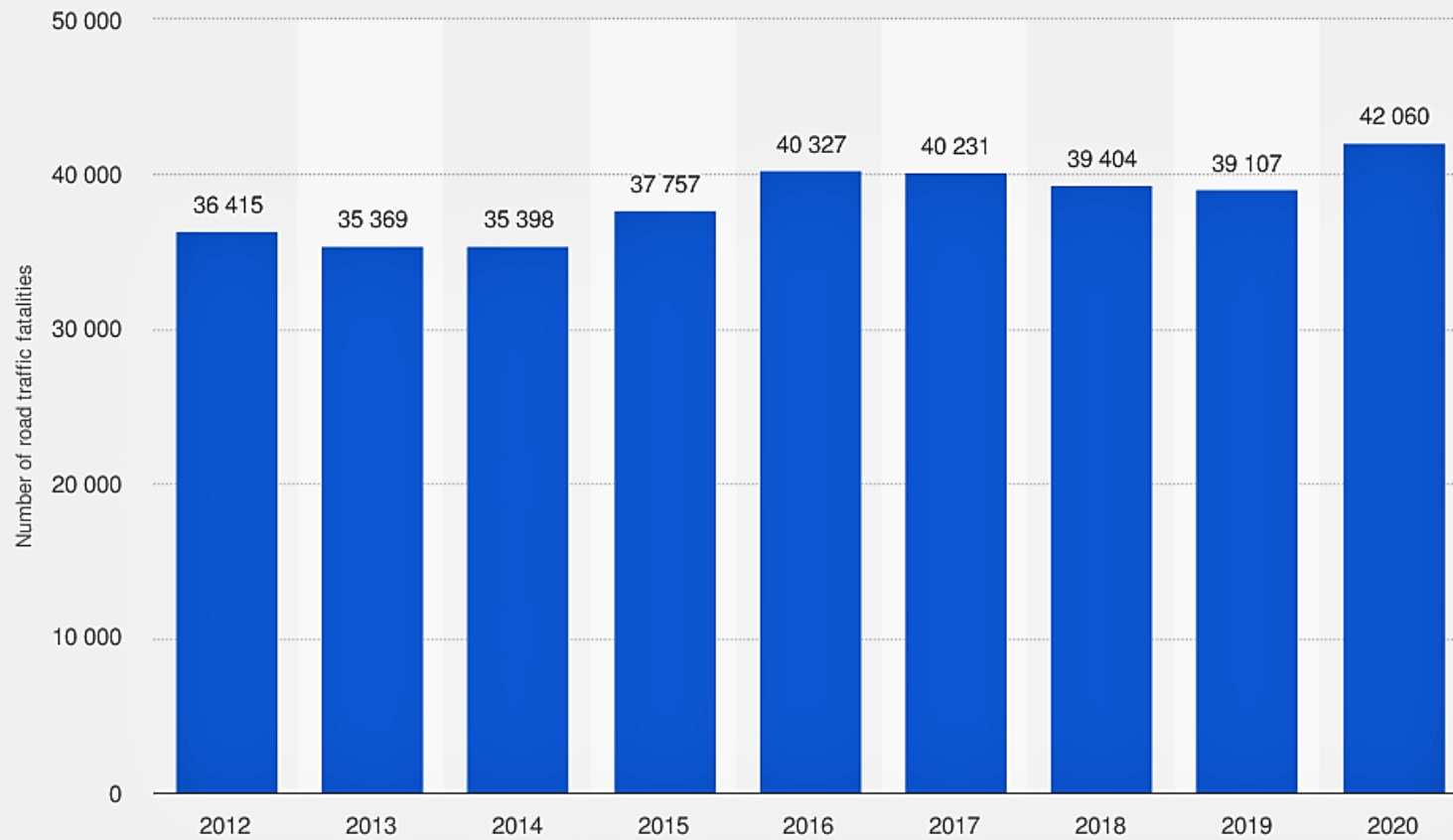
## Vehicle miles traveled before and after recessions

(Year-over-year % change in 12-month moving average of miles)



Source: FHA; NBER; RSM US

## Number of road traffic fatalities in the United States from 2012 to 2020



**Sources**  
National Safety Council; NCHS  
© Statista 2021

**Additional Information:**  
United States; National Safety Council; NCHS; 2012 to 2020



How do we explain this?



The  
Reckless  
Driver™

← NEWS

# 2020 Fatality Data Show Increased Traffic Fatalities During Pandemic

Risky Driving Behaviors Including Failure to Wear a Seatbelt, Speeding, and Drinking While Driving Identified as Contributing Factors

# *Pedestrian Deaths Spike in U.S. as Reckless Driving Surges*

Fatalities are climbing to record levels two years into the pandemic. Authorities cite drivers' anxiety levels, larger vehicles and fraying social norms.





**It's not just your imagination. Drivers in the pandemic have gotten more reckless**



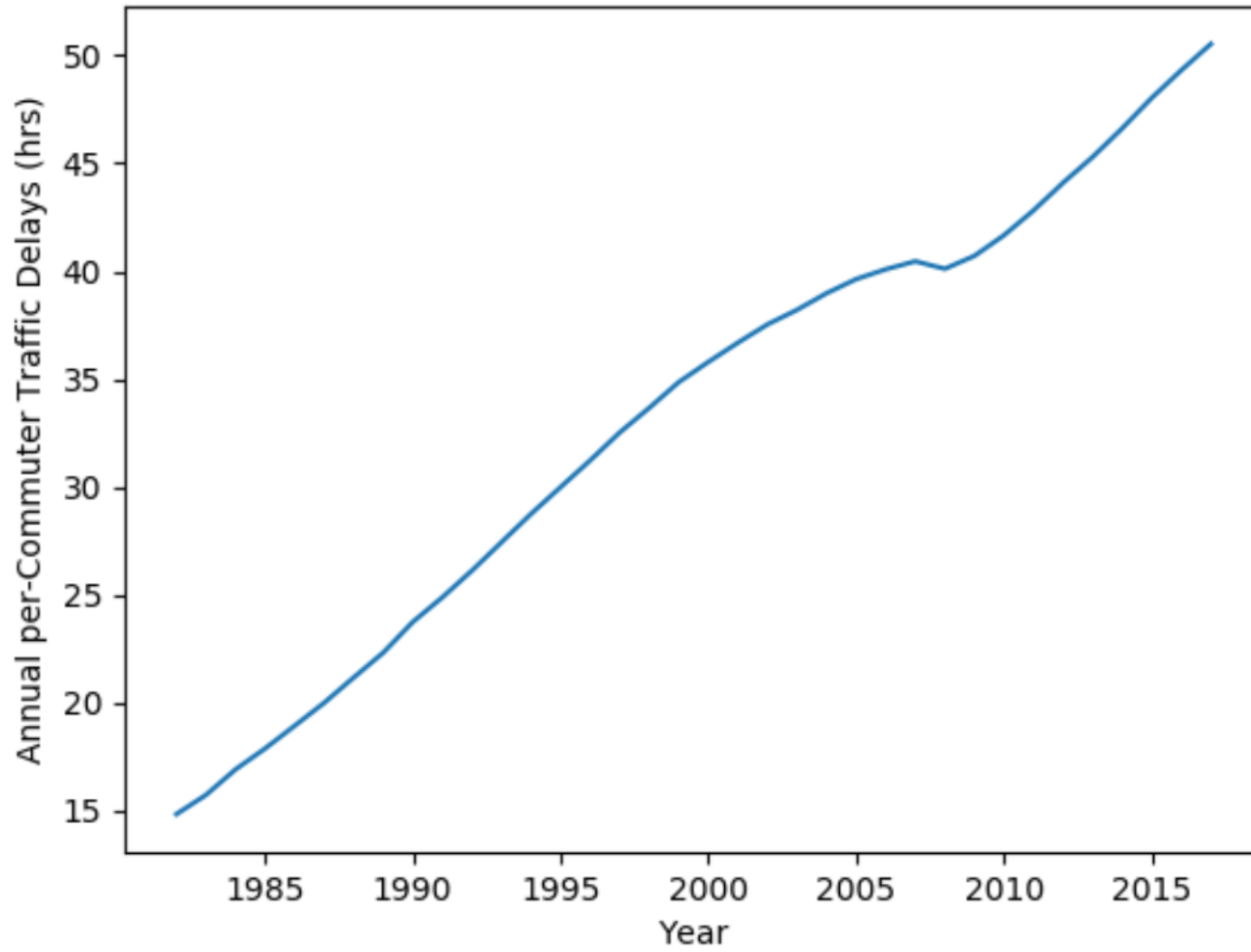
Car crash deaths have surged during COVID-19 pandemic. Here's why

---

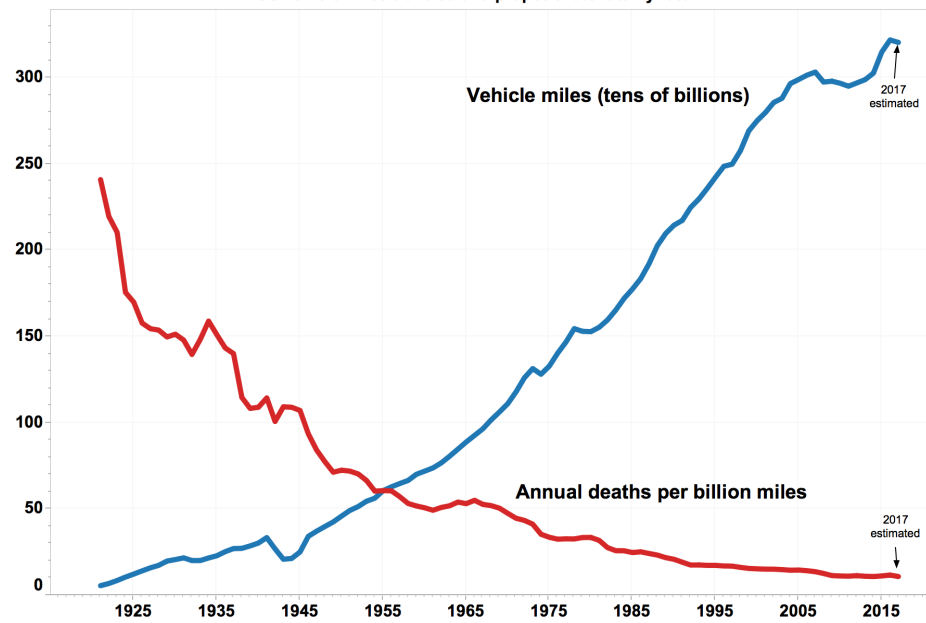
[Reckless driving is] “a sign of the overall lack of consideration we’re showing for other citizens, whether it be wearing masks, or not getting vaccinated, or how we drive.

It’s very aggressive. It’s very selfish.”

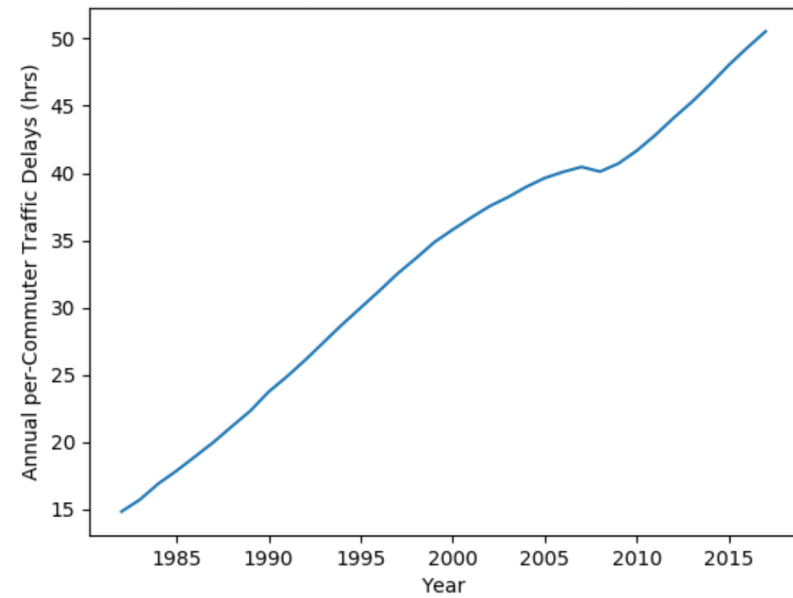
Average Annual per-Commuter Traffic Delays over Time



US vehicle miles traveled and proportionate fatality rate



Average Annual per-Commuter Traffic Delays over Time



# FORGIVING DESIGN

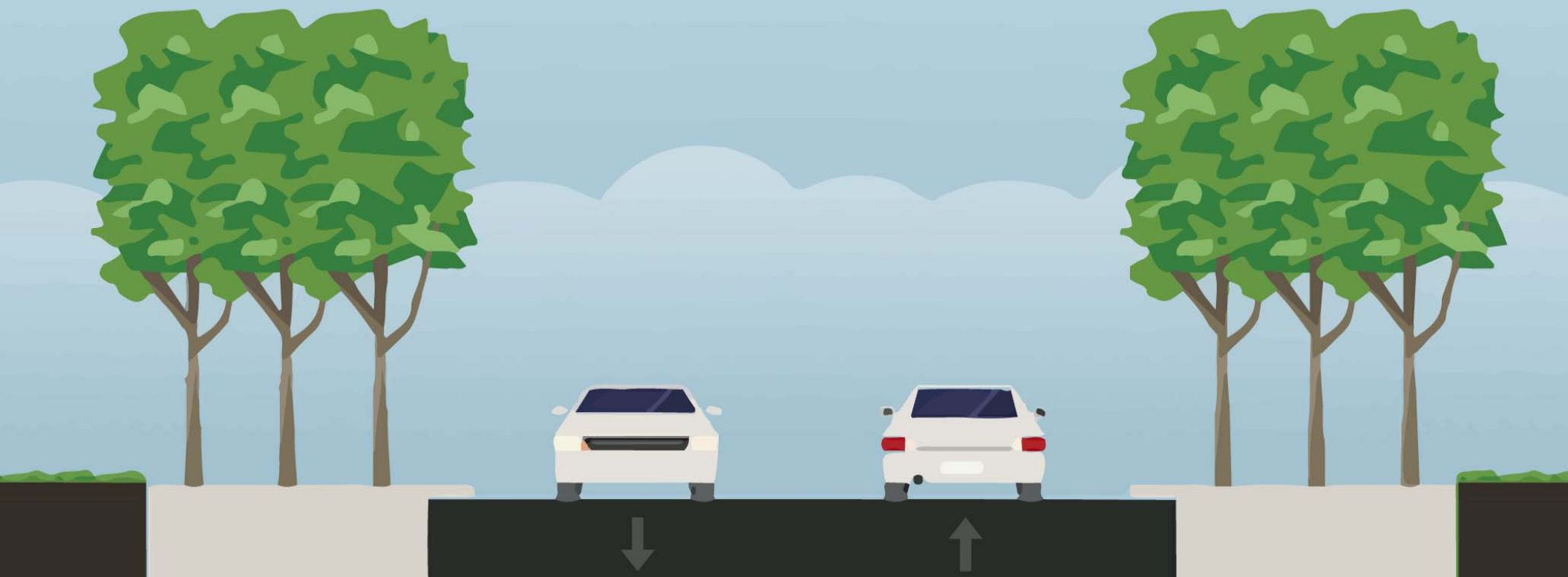


FORGIVE

# FORGIVING DESIGN

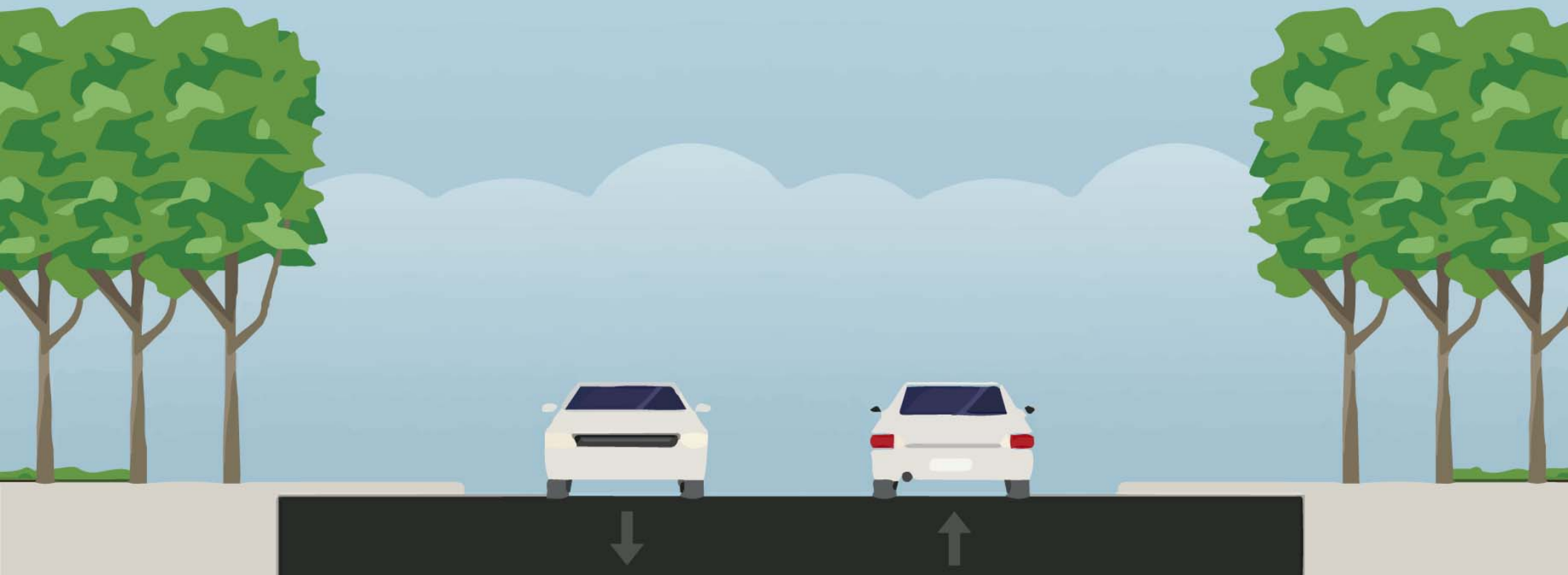


# FORGIVING DESIGN

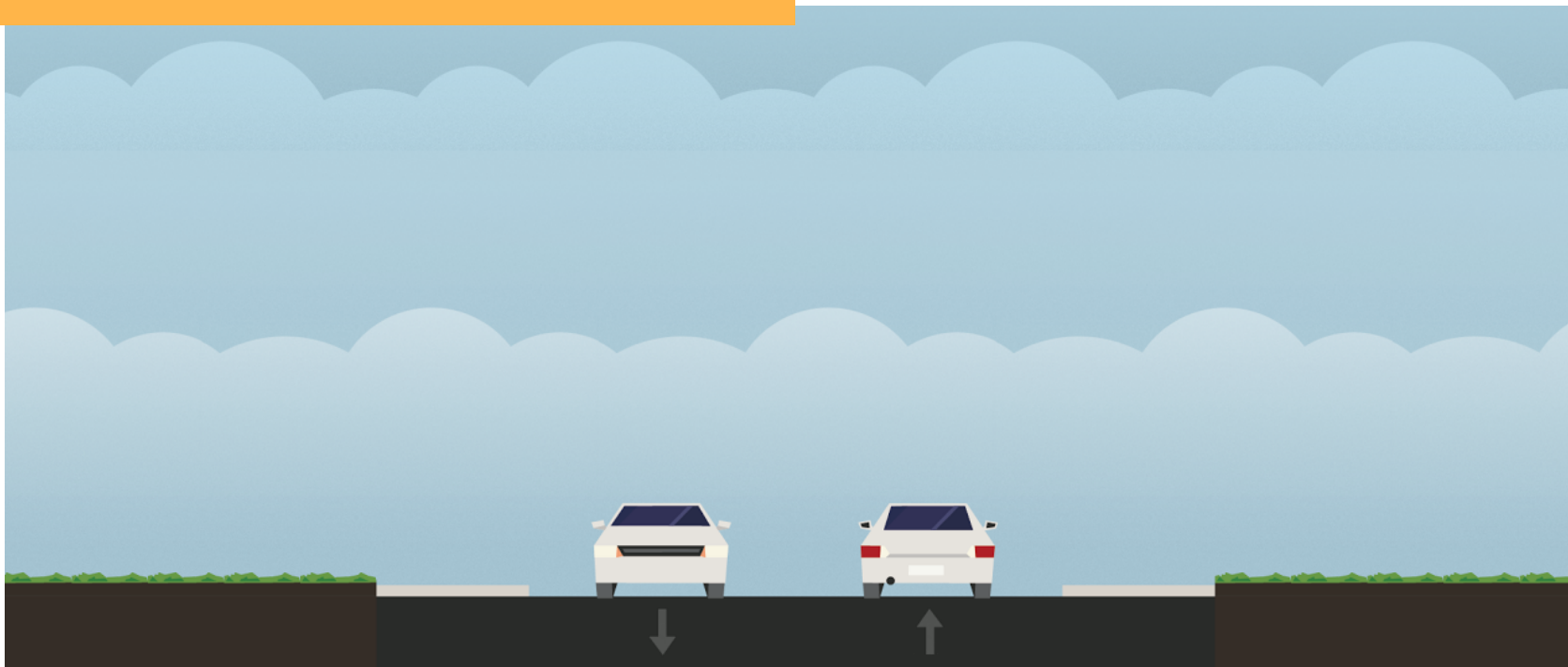




# FORGIVING DESIGN



# FORGIVING DESIGN



# FORGIVING DESIGN

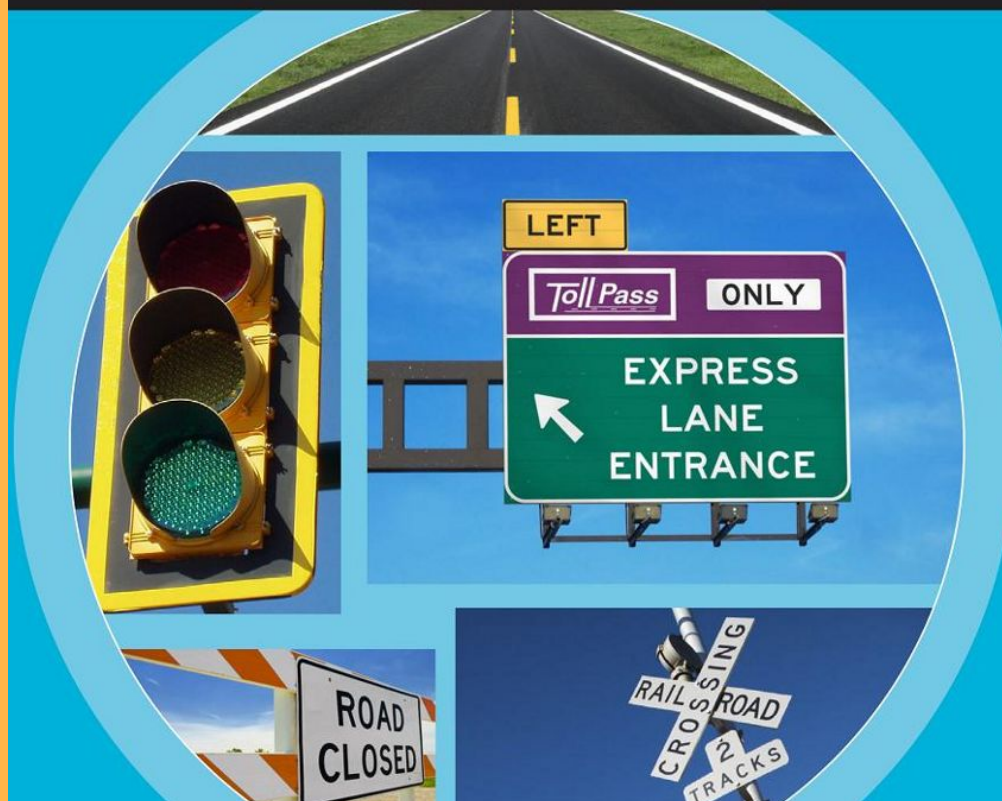


225. Street –  
see Highway

# Manual on Uniform Traffic Control Devices

for Streets and Highways

2009 Edition





SPEED  
LIMIT

25

SHERIFF

45

YOUR SPEED

## SYSTEM 1

Intuition & instinct



Unconscious  
Fast  
Associative  
Automatic pilot



## SYSTEM 2

Rational thinking



Takes effort  
Slow  
Logical  
Lazy  
Indecisive

## Uncomfortable Truth

People will tend to drive the speed they feel comfortable driving, regardless of any other factor.

**BE SAFE.  
DRIVE SMART.**



**Some mistakes you can't take back.**

Stop for pedestrians at crosswalks.

**BE SAFE. DRIVE SMART. **  
#EndTheStreakTX



**Pedestrians don't come with airbags.**

Yield the right of way to pedestrians.

**BE SAFE. DRIVE SMART. **  
#EndTheStreakTX



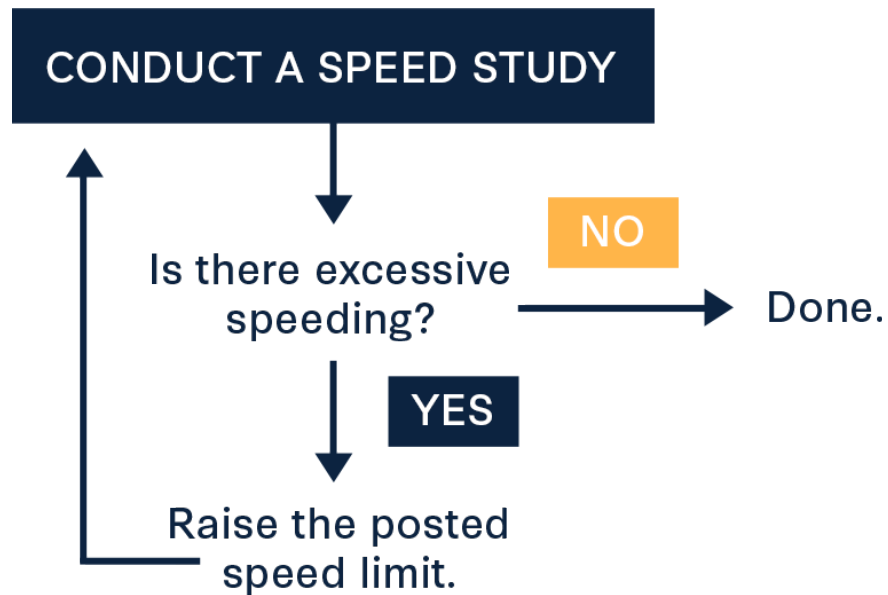
**You can't fix a pedestrian at a body shop.**

Slow down and watch for pedestrians.

**BE SAFE. DRIVE SMART. **  
#EndTheStreakTX



## Standard Engineering Approach



**If you need a sign to tell people to slow down...**



**...you designed your street wrong.**



[www.strongtowns.org](http://www.strongtowns.org)



A BOTTOM-UP REVOLUTION TO REBUILD  
AMERICAN PROSPERITY